

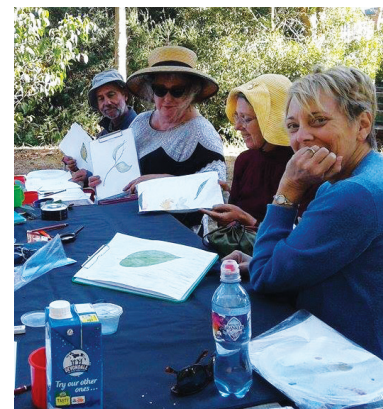
DRAFT



# Leigh Catchment Group

## STRATEGIC PLAN

2017-2023



# At a Glance



## Climate change mitigation and adaptation

- Protection of our permanent water source - the Yarrowee/Leigh River.
- Corridors for fish and fauna refuge, buffers & sanctuary
- Improved agricultural practices
- Managing your 'patch' in a changing climate

## Community support, engagement and capacity building



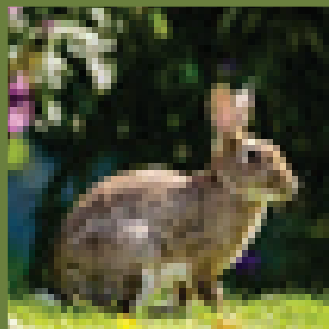
- Effective & experienced network of Landcare and Community Groups
- Supported landholders with increased capacity
- Informed and connected communities including schools



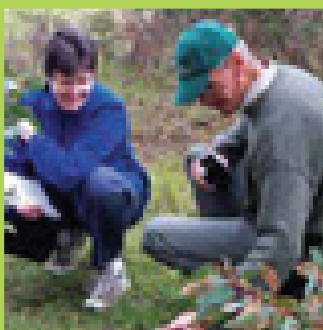
## Cultural and historical heritage protection and management

- Increased awareness and appreciation of significant sites and cultures
- Increased shared knowledge
- Increased protection and understanding of significant sites

## Pest plant and animal management

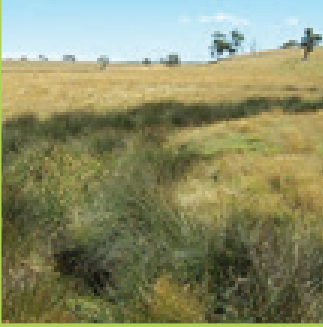


- Integrated pest plant and animal management
- Increased knowledge within the community
- Increased shared responsibility



## Protection, enhancement and restoration of biodiversity

- Increased integrated NRM projects to address biodiversity issues
- Increased knowledge and appreciation of biodiversity assets
- Increased research and monitoring
- Landscape scale planning



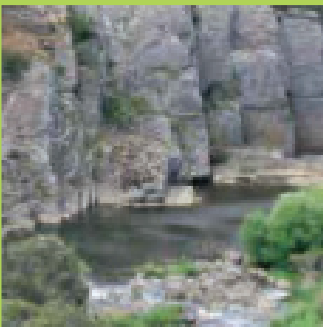
### **Salinity and soil health management**

- Increased knowledge and information sharing of salinity and soil health issues
- Ongoing monitoring and management of significant salinity areas
- Improved soil health
- Controlled erosion sites

### **Agricultural Best Practice**



- Increased knowledge and support for improved agricultural practices
- Sustainable agribusiness
- Healthy landholders



### **Waterway and wetland protection and enhancement**

- Increased protection, enhancement and restoration of our waterways and wetlands
- Increased monitoring of waterway health
- Integrated projects and planning across the catchment

### **Disaster Recovery**



- Advocacy for our communities and the environment in disaster planning
- Supported communities post disaster
- Restoration of landscape assets post disaster



### **Governance, networks and staff**

- Skilled and committed Board
- Strong links to groups, community and partners
- Well-resourced Landcare Hub
- Happy and supported staff

## 1.1. Abbreviations

AVW	Atlas of Victorian Wildlife database
ARI	Arthur Rylah Institute
BEN	Ballarat Environment Network
CAP	Catchment Action Plan
CaLP Act	<i>Catchment and Land Protection Act 1994</i>
CCMA	Corangamite Catchment Management Authority
CFA	Country Fire Authority
DEDJTR	Department of Economic Development, Jobs, Transport and Resources.
DEET	Department of Education and Training
DELWP	Department of Environment, Land, Water and Planning
EPBC Act	<i>Environment Protection and Biodiversity Conservation Act 1999</i> (Cwlth)
EVC	Ecological Vegetation Class
FFG Act	<i>Flora and Fauna Guarantee Act 1988</i> (Vic)
FIS	Flora Information System database
GIS	Geographic Information System
ISC	Index of Stream Condition
LCG	Leigh Catchment Group
LGA	Local Government Agencies
NRM	Natural Resource Management
OAAV	Office of Aboriginal Affairs Victoria
RSAB	Regional Sustainability Alliance Ballarat
TFN	Trust for Nature
TSN	Threatened Species Network
VBTF	Victorian Blackberry Taskforce
VGTF	Victorian Gorse Taskforce
VROT	Victorian Rare or Threatened species
YLCG	Yarrowee Leigh Catchment Group Inc

## 3. Introduction

### 3.1. Background

The Leigh Catchment Group (LCG) formed in 1997 following recognition by the Landcare Groups of the catchment that a combined and coordinated approach to natural resource management result in improved works and lead to an increase in funding for larger scale projects. The following Landcare groups are currently part of the LCG network:

- Bamganie-Meredith Landcare Group.
- Garibaldi Landcare Group.
- Leigh Districts Landcare Group.
- Napoleons/Enfield Landcare Group.
- Ross Creek Landcare Group.
- Upper Williamson's Creek Landcare Group.
- Wattle Flat/Pootilla Landcare Group.
- Friends of Canadian Corridor.
- Friends of Yarrowee River.

Historically the Executive Committee consisted of an independent chairman, secretary, treasurer and two voting representatives from each Landcare Group and in 2009 this system was replaced by a Board consisting of ten elected Landcare Members. The LCG became an independently incorporated association on 1st October 2013 under the name of *Yarrowee Leigh Catchment Group Incorporated* and adopted its new Constitution in June 2016.

The first Leigh Catchment Plan was produced in August 1999 by the Leigh Catchment Group with assistance from Landcare groups within the catchment. That Plan incorporated the Yarrowee River and Leigh River Management Plans. This was replaced by the Leigh Catchment Action Plan 2008 - 2013.

In August 2017, this Strategic Plan was prepared by the Leigh Catchment Group to reflect and integrate current strategic direction - addressing existing and new issues and opportunities to protect the catchment's valuable assets and mitigate potential threats to these assets.

### 3.2. Vision

***Working together to achieve sustainable ecosystems, agriculture and communities***

### 3.3. Purpose

The purposes of the Leigh Catchment Group are governed by the Yarrowee Leigh Catchment Group Inc association and are:

- To work together to ensure the preservation of natural heritage, sustainable agriculture, and communities
- To ensure the ecologically sensitive restoration, development and maintenance of the Yarrowee/Leigh River, all tributaries, corridors and associated ecological communities within the Yarrowee Leigh Catchment group area
- To support our network of Landcare groups and community-based natural resource management groups and community.

### 3.4. The Leigh Catchment Group Area

The Leigh Catchment Group area covers an area of 1580 square kilometres (Figure 1-1) and consists of the Yarrowee/Leigh R catchment plus the Barwon River subcatchments of Warrambine Creek, Native Hut Creek, and Bruces Creek and the Lake Murdeduke subcatchment of Mia Mia Creek.

The Yarrowee/Leigh R catchment itself covers an area of 890 square kilometres including the Yarrowee River which becomes the Leigh River at its confluence with Williamson's Creek. The Leigh River flows into the Barwon River at Inverleigh. The Leigh Catchment contains a diverse range of topographic features from gently undulating hills, wide valleys and river flats, to steep escarpments and rocky gorges. The catchment supports areas of significant remnant native vegetation including forests, woodlands, grasslands and wetlands occurring on private and public land. The Leigh River supports intact corridors of riparian vegetation with important fauna habitat values. Agriculture is the predominant land use in the catchment. The urban and semi urban areas of Ballarat are also a significant component of the catchment.

Rivers and tributaries of the LCG area include:

#### Yarrowee River and catchments

- Canadian Creek sub-catchment including Pennyweight Gully, No. 3 Channel, Specimen Vale and Warrenheip Gully.
- Urban sub-catchment including Little Bendigo Creek, Redan Creek, Water Street Drain, Black Hill Creek, Gnarr Creek, Gladstone Creek and Warrenheip Creek.
- Mid Yarrowee sub-catchment including Buninyong Creek, Dog Trap Creek, Ross Creek and Winter Creek.
- Lower Yarrowee sub-catchment including Back Creek, Monmouth Gully and Williamsons Creek.

#### Leigh River (begins at the confluence of Williamsons Creek and the Yarrowee River) and catchments

- Cargerie Creek
- Woodbourne/Wilsons Creek

#### Warrambine Creek catchment

#### Native Hut Creek catchment

#### Bruces Creek catchment

#### Mia Mia Creek catchment

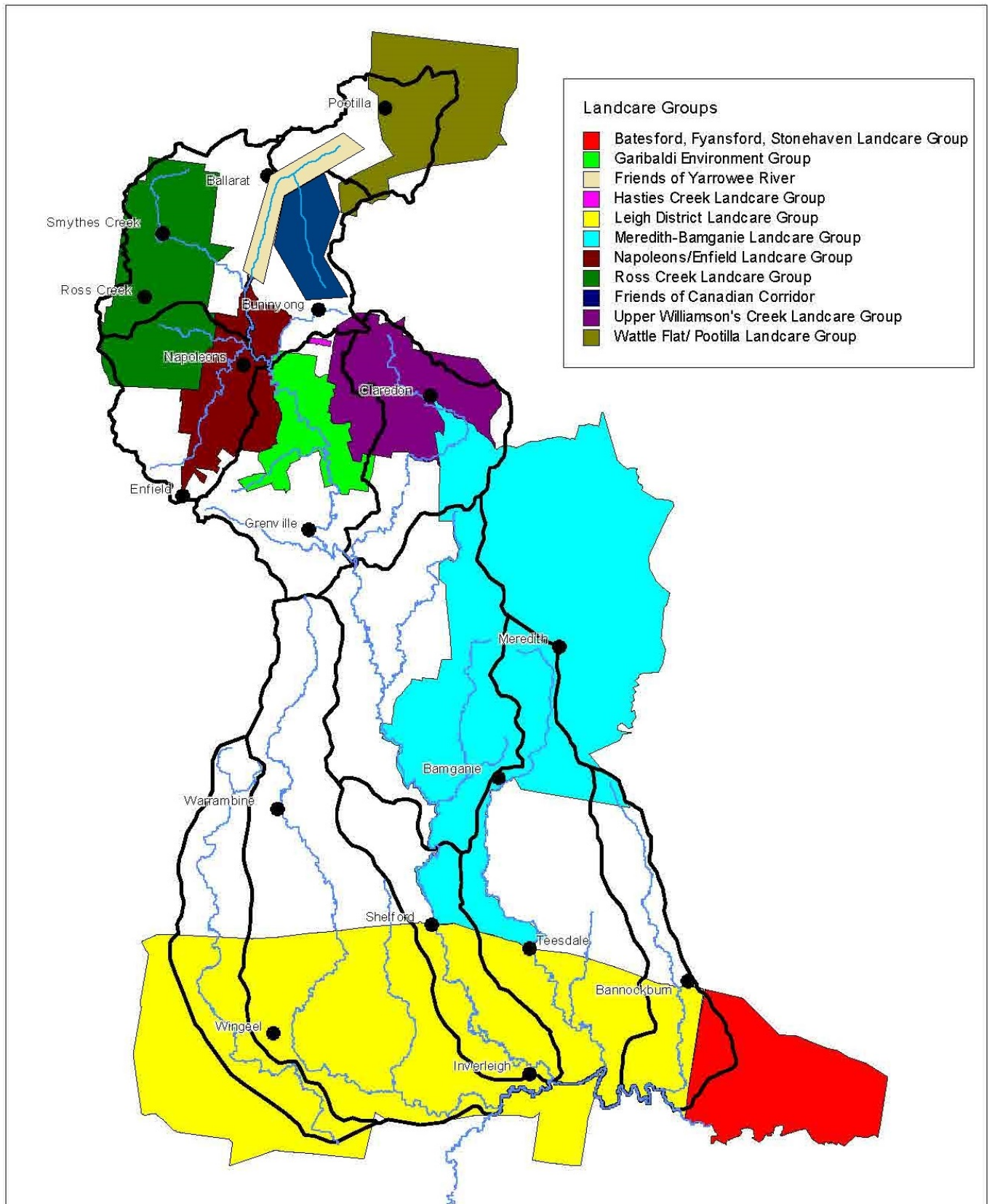
### 3.5. LCG Network Landcare Groups

There are currently nine Landcare/environment groups with areas of interest that occur within the LCG area. The groups, and the sub-catchments covered by their area of activity, are listed in Table 3-1. Landcare group boundaries are shown in Figure 3-1.

**Table 3-1 Landcare/environment groups associated with the Leigh Catchment Group area**

Landcare Group	Approx. area (ha) within LCG	Proportion of LCG area (%)	Sub-catchments covered by Landcare group
Bamganie-Meredith Landcare Group	20,340	13	Upper Leigh (50%) Native Hut (30%) Williamsons (10%) Lower Leigh (10%)
Friends of Canadian Corridor	2,500	2	Canadian
Friends of Yarrowee	1,500	1	Yarrowee
Garibaldi Landcare Group	4,000	3	Lower Yarrowee (95%) Williamsons (<5%)
Grenville Landcare Group (Closed 2015)	10,400	7	Lower Yarrowee (40%) Warrambine (30%) Upper Leigh (25%)
Leigh Districts Landcare Group	36,370	23	Warrambine (45%) Native Hut (20%) Lower Leigh (15%) Mia Mia (15%) Bruces (11%)
Napoleons-Enfield Landcare Group	5,730	4	Dog Trap/Ross (60%) Lower Yarrowee (20%) Canadian/Union Jack (15%) Winter (10%)
Ross Creek Landcare Group	9,370	6	Winter (65%) Dog Trap/Ross (35%)
Upper Williamson's Creek Landcare Group	7,700	5	Williamsons (80%) Lower Yarrowee (20%) Canadian/Union Jack (<5%)
Wattle Flat/Pootilla Landcare Group	3,370	2	Upper Yarrowee

Figure 3-1 Landcare group boundaries





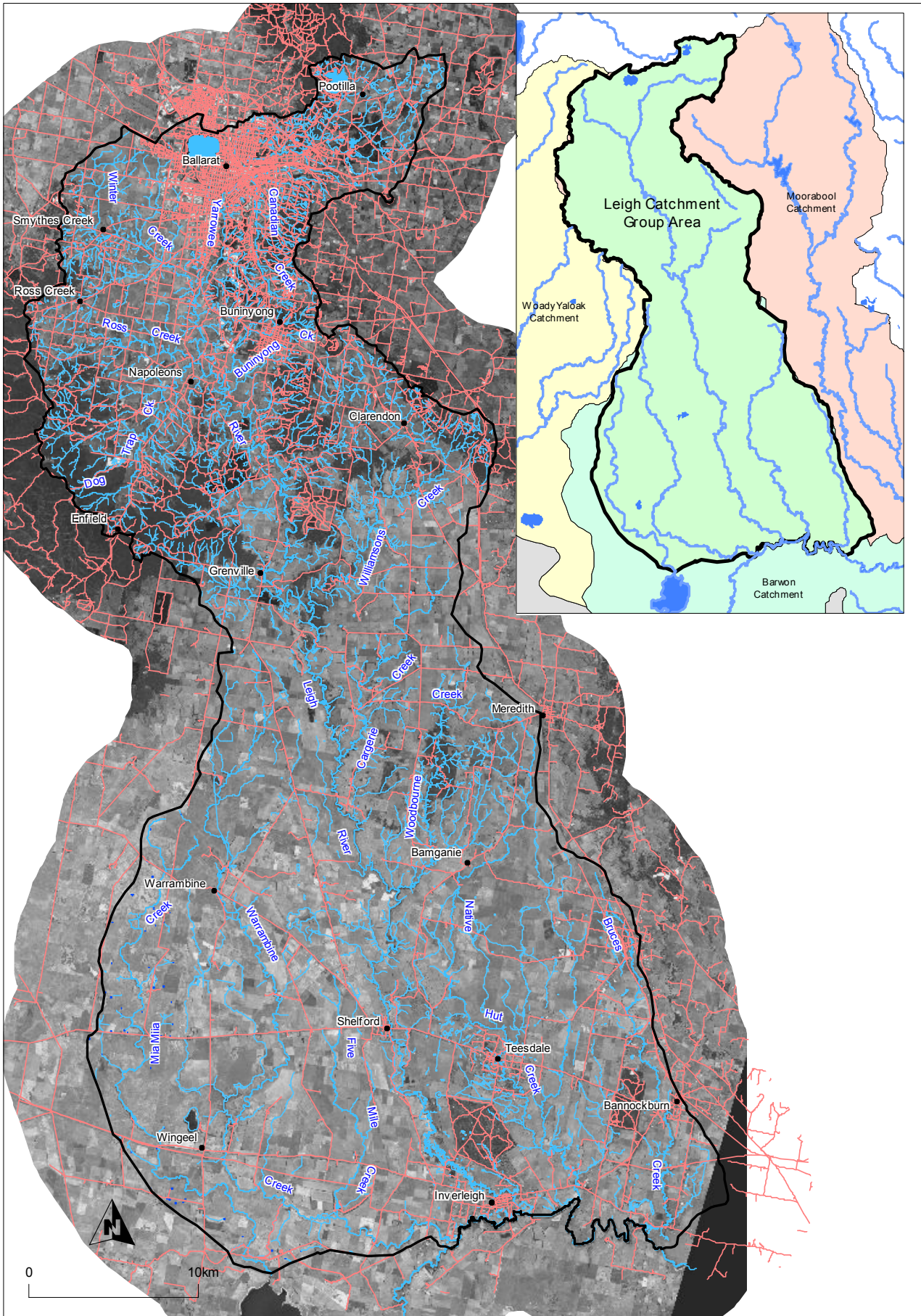
### 3.6. Natural Resource Management Stakeholders

Land, water and other natural resources within the LCG area are managed by a range of government agencies, non-government organisations, community groups, business and industry groups and private landholders. The key agencies, groups and individuals involved in natural resource management within the LCG area are:

- Ballarat and District Aboriginal Cooperative
- Ballarat Environment Network
- Barwon Water
- Central Highlands Water
- City of Ballarat
- Colac Otway and Surf Coast (small sections of the southern area of the Leigh Catchment Group area)
- Corangamite Catchment Management Authority
- Country Fire Authority
- Department of Planning and Community Development (including Aboriginal Affairs Victoria)
- Department of Environment, Land, Water and Planning
- Department of Economic Development, Jobs, Transport and Resources
- Golden Plains Shire
- Greening Australia
- Heritage Victoria
- Landcare and environmental groups (see below for list of groups within LCG area)
- Moorabool Shire Council
- Parks Victoria
- Private landholders and land managers
- Seeding Victoria
- Southern Rural Water
- VicRoads
- VicTrack
- Wadawarrung

draft

Figure 3-2 Leigh Catchment Group area



## 4. LCG activities 1997 - 2017

Land owners/managers (individuals, landcare groups, community groups and committees) have received funding assistance to undertake projects and activities (between 1997-2017) within the LCG area. These projects have addressed a range of environmental issues including remnant vegetation protection and enhancement, revegetation of degraded landscapes, salinity control, erosion control, wetland and waterway protection and restoration, habitat corridors and pest plant control, fire recovery and community development.

Approximately \$3.55 million of funding has been managed by LCG for on-ground and related activities within the LCG area.

Alongside the development and coordination of on-ground works, the LCG Landcare officers have provided support to Landcare and other community groups within the LCG area and have coordinated and implemented numerous community based activities including training courses, workshops/seminars/field days, event displays, school programs, and media events. A wide range of information resources have been developed and promoted through brochures, newsletters, electronic mailing, the internet and the media.

### 4.1. Table 3-1 Summary of LCG funding programs: 1997–2017

LCG program/project name	Funding program source	Description	Timeframe	Total budget
Ballarat to Barwon	NHT	3yr waterway protection program	1999-2001	\$493,100
CCMA	CCMA	Ballarat to Barwon support	2000-2001	\$10,000
InVEST	NHT	Indigenous Vegetation and Environmentally Sustainable Targets Project	2001-2002	\$145,000
2nd Generation Landcare	2nd Generation0102	Project Officer support	2001-2002	\$33,500
CCMA Targeted Waterways Program	CCMA	Bridal creeper and weed control, Leigh R	2001-2002	\$30,000
CCMA erosion	CCMA	Erosion mitigation – rock chute	2001-2002	\$40,000
Golden Plains Shire	Golden Plains Shire	Group support	2001	\$5,500
InVEST 2003	NHT	as for InVEST	2002-2003	\$88,650
CCMA	CCMA Initiative Fund	InVEST 2003 extra support	2002-2003	\$11,350
AFFA	NHT	Project Officer support	2002-2003	\$32,380
2nd Generation InVEST 03	2nd Generation0203	Landcare Office Support	2002-2003	\$18,190
Barunah 2003	2nd Generation0203	Waterway protection	2002-2003	\$30,000
CCMA	CCMA Initiative Fund	Rock chute extra support	2002-2003	\$8,693
AFFA	NHT	Project Officer support	2003-2004	\$80,302
CAPP 2004	NHT	Catchment Asset Protection Project	2003-2004	\$48,000
POA 2005	NAP & NHT	Protecting Our Assets	2004-2005	\$181,240
CCMA erosion	CCMA	Erosion mitigation – rock chute	2004-2005	\$43,000
Envirofund LWC 0405	NHT	Wildlife Corridors Project	2004-2005	\$17,309
2nd Generation Larundel Biolink	2nd Generation0405	Corridor and remnant protection	2004-2005	\$30,000
2nd Generation Landcare Support	2nd Generation0405	Group Support	2004-2005	\$300
Gorse Task Force	Gorse Task Force	Upper Leigh Catchment Revitalisation Project	2004-2005	\$12,000

LCG program/project name	Funding program source	Description	Timeframe	Total budget
ROLS 2006	NAP & NHT	Protecting Our Assets	2005-2006	\$165,600
Leigh River Escarpment Project 2006	NLP	Sustainable Grazing Management	2005-2006	\$34,400
2nd Generation Landcare Support	2nd Generation0506	Group Support	2005-2006	\$300
CCMA	Sue Hickey Memorial Grant 2005	Study Tour	2005-2006	\$5,000
CCMA Healthy Waterway Support Fund 05/06	CCMA	River health	2005-2006	\$43,000
SOC 2007	NAP & NHT	Protecting Our Assets II	2006-2007	\$128,800
2nd Generation Landcare Support	2nd Generation0607	Group Support	2006-2007	\$300
Envirofund Larundel	NHT	Revegetation	2006-2007	\$45,454
Golden Plains Shire	Golden Plains Shire	Group support	2007	\$5,000
2nd Generation Landcare	2nd Generation0607	Leigh Catchment Review	2006-2007	\$20,000
Landcare Grant	New Generation	Criss Cross project	2007-2008	\$167,900
2nd Generation Landcare	2nd Generation0708	Communications	2007-2008	\$20,000
Leigh Landcare Coordination	Regional Catchment Investment Plan	Landcare support	2008-2009	\$70,400
Coordinator Support	CCMA	Landcare support	2008-2009	\$6,000
Waterwatch	LCG	Citizen science	2008-2009	\$15,000
2nd Generation Landcare	2nd Generation0809	Building on Ten Years	2008-2009	\$18,000
Golden Plains Shire	Golden Plains Shire	Group support	2008	\$5,000
2nd Generation Landcare	2nd Generation0910	Revegetation	2009-2010	\$20,900
River Health 0910	CCMA	River health	2009-2010	\$98,000
Landcare support	CCMA	Landcare support	2009-2010	\$6,600
Serrated Tussock	CCMA	Awareness Program	2009-2010	\$16,500
Promotions grant	CCMA	Social media	2009-2010	\$1,133
Landcare Support Grant	2nd Generation0910	Group admin support	2009-2010	\$330
Golden Plains Shire	Golden Plains Shire	Group support	2009	\$5,000
River Health 10/11	CCMA	River health	2010-2011	\$116,858
2nd Generation Landcare	2nd Generation1011	Revegetation	2010-2011	\$22,900
Board Grant	CCMA	Landcare program	2010-2011	\$25,000
Landscape Zone Action Plans	CCMA	Planning	2010-2011	\$15,000
Gorse Target Area	Victorian Gorse Task Force	Gorse control	2010-2011	\$4,500
Golden Plains Shire	Golden Plains Shire	Group support	2010	\$5,000
Volunteer Recruitment Initiative	CCMA	Group support	2010-2011	\$5,583
River Health 11/12	CCMA	River health	2011-2012	\$13,962

LCG program/project name	Funding program source	Description	Timeframe	Total budget
Landcare coordinator support	Victorian Local Landcare Facilitators Initiative	Landcare coordinator	2011-2012	\$12,790
Corangamite Landcare 11/12	CCMA	Landcare coordinator	2011-2012	\$10,000
25 Years Landcare	Victorian Landcare	Expo	2011-2012	\$4,614
Golden Plains Shire	Golden Plains Shire	Group support	2011	\$5,000
Landcare coordinator support	VLLFI	Landcare coordinator	2012-2013	\$46,510
Foundation Grant	VLLFI	8 Landcare groups support	2012-2013	\$2,000
Communities for Nature Yr 1	DEPI	Back from the Brink	2012-2013	\$34,508
Corangamite Landcare Grant 12/13	CCMA	Pest control	2012-2013	\$12,515
Securing the Health of Barwon/ Leigh 12/13	CCMA	River health	2012-2013	\$29,602
Volunteer Recruitment Initiative	CCMA	Group support	2012-2013	\$1,500
Gorse Target Area Yr1	Victorian Gorse Task Force	Garibaldi/Napoleons	2012-2013	\$10,000
Golden Plains Shire	Golden Plains Shire	Revegetation	2012	\$5,000
Community Restoration of Yarrowee	CHW	Rabbit control	2012-2013	\$2,200
Communities for Nature	DEPI	Ross Creek Wetland	2012-2013	\$5,200
Landcare Coordinator support	VLLFI		2013-2014	\$46,510
Communities for Nature Yr 2	DEPI	Back from the Brink	2013-2014	\$36,748
Securing the Health of Barwon/ Leigh 13/14	CCMA	River health	2013-2014	\$25,711
Golden Plains Shire	Golden Plains Shire	Woody weed control support	2013	\$5,000
Breathing Life into the Yarrowee	City of Ballarat	Community engagement	2013-2014	\$32,000
Farmer engagement	Regional Landcare Facilitator CCMA	Southern catchment	2013-2014	\$3,200
Landcare Support Grant 14/15	CCMA	Group support	2014-2015	\$500
Landcare Coordinator support	VLLFI	Landcare coordinator	2014-2015	\$46,511
Communities for Nature Yr 3	DELWP	Back from the Brink	2014-2015	\$33,548
Breathing Life into the Yarrowee	City of Ballarat	Community engagement	2014-2015	\$32,000
Securing the Health of Barwon/ Leigh 14/15	CCMA	River health	2014-2015	\$30,754
Gorse Target Area Yr2	Victorian Gorse Task Force	Garibaldi/Napoleons	2014-2015	\$10,000
Farmer engagement	Regional Landcare Facilitator CCMA	Southern catchment	2014-2015	\$2,640

LCG program/project name	Funding program source	Description	Timeframe	Total budget
Corangamite Landcare Grant	CCMA	Franklins Bridge Reserve	2014-2015	\$11,074
Golden Plains Shire	Golden Plains Shire	Revegetation	2014	\$2,500
Land Health Program	National Landcare Program/CCMA	Soils workshops	2014-2015	\$4,880
Sue Hickey Memorial Grant	CCMA	Catchment Tours	2014-2015	\$1,000
Landcare Coordinator Support	Victorian Landcare Facilitator Program	Landcare Coordinator	2015-2016	\$46,511
Breathing Life into the Yarrowee	City of Ballarat	Community engagement	2015-2016	\$32,000
Gorse Target Area	Victorian Gorse Task Force	LalLal/Clarendon	2015-2016	\$24,340
Communities for Nature Yr 4	DELWP	Back from the Brink	2015-2016	\$21,299
Threatened Species Grant	DELWP	Bannockburn Bushland Reserve	2015-2016	\$19,310
Threatened Species Grant	DELWP	Growling Grass Frog	2015-2016	\$12,790
Corangamite Landcare Grant	CCMA	Franklin's Bridge	2015-2016	\$2,269
Securing the Health of Barwon/ Leigh 15/16	CCMA	River health	2015-2016	\$5,106
Corangamite Landcare Grant	CCMA	Group support	2015-2016	\$500
Scotsburn Phoenix Project Yr1	Dept of Treasury, CCMA	Bushfire Recovery Project	2015-2016	\$25,781
Waterways Incentive	CCMA	River health	2016-2017	\$126,418
Scotsburn Phoenix Project Yr2	Dept of Treasury, CCMA	Bushfire Recovery Project	2016-2017	\$155,198
Land Health Program	National Landcare Program/CCMA	Soils/pastures workshops	2016-2017	\$2,720
Community Landcare Grant	CCMA	Revitalisation of Union Jack Creek	2016-2017	\$14,000
Sue Hickey Memorial Grant	CCMA	Governance training	2016-2017	\$4,900
Landcare Support Grant	CCMA	Group admin support	2016-2017	\$500
Community Impact Grant	City of Ballarat	Discover the Treasures of the Yarrowee	2016-2017	\$5,394
Engaging Communities	City of Ballarat	Connecting to Nearby Nature – Brown Hill	2016-2017	\$9,625
Threatened Species	DELWP	Growling Grass Frogs	2016-2017	\$22,900
Landcare Coordinator Support	Victorian Landcare Facilitator Program	Landcare coordinator	2016-2017	\$47,674
Community Grant	Golden Plains Shire	Website	2016-2017	\$1,475
Gorse Target Area	Victorian Gorse Task Force	Lal Lal/Clarendon	2015-2016	\$2,500
			<b>TOTAL</b>	<b>\$3,555,159</b>

## 5. Actions

The actions that aim to protect or enhance the identified assets, and reduce the impact of the identified threats within the LCG area, are grouped under the following outcome themes:

- Climate change mitigation and adaptation.
- Community support, engagement and capacity building.
- Cultural and historical heritage protection and management.
- Pest plant and animal management.
- Protection, enhancement and restoration of biodiversity.
- Salinity and soil health management.
- Agricultural Best Practice.
- Waterway and wetland protection and enhancement.

This section presents priority actions for works and activities. The Actions table lists an action reference number, the type of action, priorities or targets for the implementation of the action, methods or techniques that may be employed to implement the action and a list of key stakeholders or partners that may assist or support the delivery of the action.

### 5.1. Actions for the Leigh Catchment Group Area

Ref.	Action	Priorities/location	Methods	Stakeholders/Partners
<b>1</b>	<b>Climate change mitigation and adaptation</b>			
1.1	Investigate opportunities to establish carbon offset/trading programs for the LCG area.	<ul style="list-style-type: none"> <li>• Auditing programs</li> <li>• Carbon sequestration programs</li> </ul>	<ul style="list-style-type: none"> <li>• Information sessions, workshops and meetings</li> <li>• Trial sites</li> </ul>	<ul style="list-style-type: none"> <li>• Carbon offset/trading groups</li> <li>• Landholders</li> </ul>
1.2	Support and promote carbon emission reduction programs.	<ul style="list-style-type: none"> <li>• Carbon emission reduction programs for agriculture</li> <li>• Household emission reduction education programs</li> </ul>	<ul style="list-style-type: none"> <li>• Arrange meetings between LCG officers/executive and program coordinators</li> <li>• Provide opportunities for presentations and information sessions</li> <li>• Publicise programs in LCG media material</li> </ul>	<ul style="list-style-type: none"> <li>• DELWP</li> <li>• CCMA</li> <li>• Sustainability Victoria</li> <li>• Landcare/community groups</li> </ul>
1.3	Investigate impacts of climate change on catchment assets, NRM management techniques and biodiversity.	<ul style="list-style-type: none"> <li>• Waterway and wetland change</li> <li>• Adaptation of revegetation methods</li> <li>• Weather events</li> <li>• Reduced water availability</li> <li>• Be mindful of impacts on sustainable agriculture</li> </ul>	<ul style="list-style-type: none"> <li>• Develop and/or support projects investigating the impact of climate change on natural resources in the Corangamite region.</li> <li>• Engage with climate change initiatives e.g. South West Climate Change Portal, Future Landscapes</li> </ul>	<ul style="list-style-type: none"> <li>• Tertiary institutions and research groups</li> <li>• DELWP</li> <li>• CCMA</li> <li>• LGAs</li> </ul>
1.4	Develop a carbon neutral policy for the Leigh Catchment Group.	<ul style="list-style-type: none"> <li>• LCG activities</li> </ul>	<ul style="list-style-type: none"> <li>• Undertake carbon audit for LCG activities.</li> <li>• Set emissions targets</li> <li>• Identify actions for reducing emissions</li> <li>• Reduce waste-recycle paper, use recycled paper for publishing</li> </ul>	<ul style="list-style-type: none"> <li>• Sustainability Victoria</li> </ul>

Ref.	Action	Priorities/location	Methods	Stakeholders/Partners
<b>2</b>	<b>Community support, engagement and capacity building</b>			
2.1	Provide support to LCG Landcare groups and individuals	<ul style="list-style-type: none"> <li>• LCG member Landcare groups</li> <li>• Related community environmental groups</li> <li>• Develop alternative models for engagement of individuals</li> </ul>	<ul style="list-style-type: none"> <li>• Project management</li> <li>• NRM advice and information</li> <li>• Funding opportunities</li> <li>• Networking</li> <li>• Site assessments</li> <li>• Implementation of Landcare support strategy processes and recommendations</li> <li>• Publicity</li> <li>• Meetings</li> </ul>	<ul style="list-style-type: none"> <li>• Landcare/community groups</li> <li>• CCMA</li> <li>• Individuals</li> </ul>
2.2	Promote landholder involvement with Landcare groups.	<ul style="list-style-type: none"> <li>• Private landholders within the LCG area</li> </ul>	<ul style="list-style-type: none"> <li>• Field days</li> <li>• Event displays</li> <li>• Promotional material</li> <li>• Media releases</li> </ul>	<ul style="list-style-type: none"> <li>• Landcare/community groups</li> <li>• CCMA</li> <li>• DELWP</li> <li>• Greening Australia</li> </ul>
2.4	Increase community awareness and knowledge of NRM issues, activities and methods.	<ul style="list-style-type: none"> <li>• General community</li> </ul>	<ul style="list-style-type: none"> <li>• Undertake education and information program targeted at small acreage landholders</li> <li>• Conduct information sessions, field days, catchment tours and workshops.</li> <li>• Undertake and promote surveys of remnant vegetation patches</li> <li>• Develop/support community based fauna survey/field day events</li> <li>• Produce newsletters and media releases</li> <li>• Develop and maintain internet based resources.</li> <li>• Provide information sources and reference material to landholders</li> </ul>	<ul style="list-style-type: none"> <li>• Landholders</li> <li>• Landcare/community groups</li> <li>• Greening Australia</li> <li>• CCMA</li> <li>• DSE/DPI</li> <li>• Schools and tertiary institutions</li> </ul>
2.5	Engage with local schools based education programs or activities.	<ul style="list-style-type: none"> <li>• Primary and secondary schools within the LCG area</li> </ul>	<ul style="list-style-type: none"> <li>• Develop and run practical activities for students.</li> <li>• Promote and assist established citizen science programs such as Young Landcare, Waterwatch</li> <li>• Undertake school/community research joint projects</li> <li>• Maintenance and monitoring of project sites</li> </ul>	<ul style="list-style-type: none"> <li>• Schools</li> <li>• Landcare/community groups</li> <li>• DEET</li> <li>• ARI</li> </ul>
2.6	Build local community capacity to enable groups/networks to be self-sustaining	<ul style="list-style-type: none"> <li>• LCG member Landcare groups</li> </ul>	<ul style="list-style-type: none"> <li>• Promote and coordinate training opportunities for Landcare groups e.g. Farm Chemicals course, plant ID, chainsaw Use</li> <li>• Promote networking between Landcare groups and other networks e.g. Farm walks, bus tours, dinners, information sessions</li> </ul>	<ul style="list-style-type: none"> <li>• LCG</li> <li>• Landcare groups</li> <li>• Training providers</li> </ul>
2.7	Healthy communities	<ul style="list-style-type: none"> <li>• Individual health outcomes through connection to the land – Nature Deficit Disorder</li> </ul>	<ul style="list-style-type: none"> <li>• Promote health benefits from nature</li> <li>• Develop and run practical activities</li> </ul>	<ul style="list-style-type: none"> <li>• LCG</li> <li>• Health agencies</li> <li>• Community groups</li> </ul>



Ref.	Action	Priorities/location	Methods	Stakeholders/Partners
<b>3</b>	<b>Cultural and historic heritage protection and management</b>			
3.1	Increase community awareness and knowledge of cultural and historic features of the LCG area.	<ul style="list-style-type: none"> <li>General community</li> </ul>	<ul style="list-style-type: none"> <li>Conduct workshops and/or field days</li> <li>Provide information sources and reference material to landholders</li> <li>Abide by the appropriate legislation</li> </ul>	<ul style="list-style-type: none"> <li>LCG</li> <li>Landcare groups</li> <li>Landholders</li> <li>Wadawurrung Registered Aboriginal Party</li> <li>Wathaurong Aboriginal Cooperative</li> <li>Ballarat and District Aboriginal Cooperative</li> <li>OAAV</li> <li>Heritage Victoria</li> <li>Historical societies</li> </ul>
3.2	Assist landholders and land managers to protect significant cultural and historic sites.	<ul style="list-style-type: none"> <li>Private landholders</li> <li>Identified significant cultural and historic sites</li> </ul>	<ul style="list-style-type: none"> <li>Provide information and facilitate communication between landholders and relevant groups and agencies</li> </ul>	<ul style="list-style-type: none"> <li>LCG</li> <li>Landcare groups</li> <li>Landholders</li> <li>Wadawurrung Registered Aboriginal Party</li> <li>Wathaurong Aboriginal Cooperative</li> <li>Ballarat and District Aboriginal Cooperative</li> <li>OAAV</li> </ul>
3.3	Increased awareness and knowledge of traditional land management techniques	<ul style="list-style-type: none"> <li>Grassland and woodland fire burning</li> </ul>	<ul style="list-style-type: none"> <li>Liaison with key indigenous representatives</li> <li>Attendance at training and planned burns</li> </ul>	<ul style="list-style-type: none"> <li>Wadawurrung Registered Aboriginal Party</li> <li>Wathaurong Aboriginal Cooperative</li> <li>Ballarat and District Aboriginal Cooperative</li> <li>OAAV</li> <li>LGAs</li> <li>CFA</li> </ul>

Ref.	Action	Priorities/location	Methods	Stakeholders/Partners
<b>4</b>	<b>Pest plant and animal management</b>			
4.1	Undertake targeted control of CaLP Act listed weeds for the Corangamite area.	<ul style="list-style-type: none"> <li>Areas supporting priority EVCs</li> <li>Waterways</li> <li>High conservation status roadsides</li> <li>Locally significant sites identified through Local Action Plans.</li> <li>Public and private land</li> </ul>	<ul style="list-style-type: none"> <li>Coordinate with key agencies</li> <li>Chemical, physical and biological control treatments, as developed, of infestations.</li> <li>Link landholders to registered training programs e.g. ACUP</li> <li>Weed identification training</li> <li>Monitoring, mapping (drone)</li> </ul>	<ul style="list-style-type: none"> <li>Landholders</li> <li>DELWP</li> <li>Gorse Task Force</li> <li>Serrated Tussock Task Force</li> <li>CCMA</li> <li>ARI</li> </ul>
4.2	Work on joint projects with Good Neighbour Program, Task Force, local government and similar programs.	<ul style="list-style-type: none"> <li>Designated priority areas</li> <li>Priority weed infestations adjacent and within public land</li> <li>Private land</li> </ul>	<ul style="list-style-type: none"> <li>Coordinate with relevant agencies and groups</li> </ul>	<ul style="list-style-type: none"> <li>Landholders</li> <li>Landcare/community groups</li> <li>VGTF, VBTF, VSTF</li> <li>DELWP</li> <li>LGAs</li> <li>Parks Victoria</li> </ul>
4.3	Support integrated weed control programs	<ul style="list-style-type: none"> <li>Private and public land projects</li> <li>High conservation roadsides</li> <li>Remnant vegetation</li> </ul>	<ul style="list-style-type: none"> <li>Field days/ information sessions re varied control method options, best practice</li> <li>Undertake local weed audits</li> <li>Support local group initiatives</li> <li>Support programs that target WONS</li> </ul>	<ul style="list-style-type: none"> <li>Landholders</li> <li>Landcare/community groups</li> <li>VGTF, VBTF, VSTF</li> <li>DELWP</li> <li>LGAs</li> </ul>
4.4	Support targeted pest animal control	<ul style="list-style-type: none"> <li>Priority areas defined by the CCMA Rabbit Action Plan</li> <li>Sites supporting rare/or threatened flora and fauna</li> <li>Areas identified by NRM agency programs</li> <li>Sites supporting CCMA priority EVCs</li> <li>Locally significant sites identified through Local Action Plans.</li> <li>Roadsides with high conservation values</li> <li>Urban/Semi urban areas</li> </ul>	<ul style="list-style-type: none"> <li>Accepted pest animal control treatments including habitat destruction where appropriate</li> <li>Develop strategies to assist rural-urban areas</li> <li>Ensure best management practices related to control around threatened species e.g. Brolgas</li> <li>Consultation with landholders, community groups and NRM agencies</li> </ul>	<ul style="list-style-type: none"> <li>Landholders</li> <li>Landcare/community groups</li> <li>CCMA</li> <li>DELWP</li> <li>TSN</li> </ul>

Ref.	Action	Priorities/location	Methods	Stakeholders/Partners
<b>5</b>	<b>Protection, enhancement and restoration of biodiversity, native vegetation, threatened flora and faun</b>			
5.1	Manage remnant vegetation and fauna habitat on private land for conservation.	<ul style="list-style-type: none"> <li>Priority sites defined by national, state and regional strategies</li> <li>Areas known to support threatened flora and/or fauna.</li> <li>Areas covered by Vegetation Protection Overlays, Environmental Significance Overlays, Salinity Management Overlays or Erosion Management Overlays.</li> <li>Urban and semi-urban areas subject to development.</li> <li>Native grasslands</li> <li>Locally significant sites identified through Local Action Plans.</li> </ul>	<ul style="list-style-type: none"> <li>Fencing for site management</li> <li>Cease clearing and timber removal</li> <li>Support and encourage enforcement of native vegetation protection legislation</li> <li>Ecological burning</li> <li>Controlled grazing for biomass and weed control</li> <li>Pest plants and animals control</li> <li>Restore degraded or missing vegetation components, Understorey enhancement</li> <li>Ecological thinning</li> <li>Scattered tree protection</li> <li>Educational activities including new landholders</li> <li>Promotional activities - local newsletters, Leighway, e news, social media</li> </ul>	<ul style="list-style-type: none"> <li>Landholders</li> <li>Landcare/community groups</li> <li>CCMA</li> <li>DELWP</li> <li>LGAs</li> <li>Greening Australia</li> <li>Seeding Victoria</li> <li>CFA</li> <li>Land for Wildlife</li> </ul>
5.2	Support agencies and other groups to protect, enhance and restore remnant vegetation and fauna habitat on public land and crown land reserves	<ul style="list-style-type: none"> <li>Priority sites defined by national, state and regional strategies</li> <li>Roadsides with general high conservation value.</li> <li>Roadsides that connect, or potentially connect remnant patches of vegetation.</li> <li>Areas known to support threatened flora and or fauna</li> <li>Local significant sites identified through Local Action Plans</li> </ul>	<ul style="list-style-type: none"> <li>Identify and establish joint/collaborative revegetation and remnant protection projects</li> <li>Advise road managers of LCG NRM projects being undertaken adjacent or in close proximity to road reserves.</li> <li>Support and encourage enforcement of native vegetation protection legislation</li> <li>Foster new relationships and good communication with existing organisations</li> <li>Advise relevant land managers of LCG NRM projects being undertaken adjacent or in close proximity to areas of public land.</li> <li>Identify and establish joint/collaborative projects for sites that cover public and private land.</li> </ul>	<ul style="list-style-type: none"> <li>VicRoads</li> <li>VicTrack</li> <li>Local Government</li> <li>Adjoining landholders</li> <li>CFA</li> <li>Parks Victoria</li> <li>DELWP</li> <li>Ballarat Environment Network</li> <li>Friends/Community Groups</li> <li>Community</li> <li>Management committees</li> <li>Schools</li> </ul>
5.4	Revegetate areas on private land for biodiversity protection and enhancement.	<ul style="list-style-type: none"> <li>Areas directly adjacent to roadsides supporting remnant vegetation.</li> <li>Vegetation/habitat corridors or linking patches between remnant vegetation patches or past revegetation sites.</li> <li>Areas adjacent to sites known to support rare and/or threatened native fauna.</li> <li>Areas adjacent to permanent or semi-permanent water including major waterways and wetlands.</li> <li>Locally significant sites identified through Local Action Plans.</li> </ul>	<ul style="list-style-type: none"> <li>Implement standard revegetation methods to establish a range of lifeforms/strata that match the relevant local EVCs</li> <li>Incorporate habitat features for a range of wildlife.</li> <li>Assist with species selection to ensure revegetation with suitable species adjacent to threatened EVCs.</li> <li>Publicise potential native weeds to the community</li> </ul>	<ul style="list-style-type: none"> <li>Landholders</li> <li>Landcare/community groups</li> <li>VicRoads</li> <li>Local Government</li> <li>CCMA</li> <li>DELWP</li> <li>Parks Victoria</li> <li>Greening Australia</li> <li>Seeding Victoria</li> </ul>
5.5	Support fauna and flora survey/ assessments.	<ul style="list-style-type: none"> <li>Roadsides and rail reserves</li> <li>Remnant vegetation on private land</li> <li>Revegetation sites</li> <li>Areas with no or few existing plant or animal records.</li> </ul>	<ul style="list-style-type: none"> <li>Collaborate with relevant organisations or groups to develop survey and research projects</li> <li>Promote information on Carbon initiatives and other carbon sequestration schemes</li> <li>Identification posters posted in local schools, shopping areas, Landcare groups</li> <li>Highlight significant flora &amp; fauna</li> <li>Support new methodologies and technologies to undertake surveys/ assessments.</li> </ul>	<ul style="list-style-type: none"> <li>Research institutions</li> <li>Field Naturalist groups</li> <li>Bird observer groups</li> <li>DELWP</li> <li>Greening Australia</li> <li>Landcare/community groups</li> <li>Schools</li> <li>Tertiary institutions</li> <li>TFN</li> <li>Landholders</li> </ul>

Ref.	Action	Priorities/location	Methods	Stakeholders/Partners
<b>6</b>	<b>Soils and agricultural land management</b>			
6.1	Establish priority salinity management areas.	<ul style="list-style-type: none"> <li>• LCG area</li> <li>• Priority salinity areas</li> </ul>	<ul style="list-style-type: none"> <li>• Collate existing information on the LCG area and history including Waterwatch and Saltwatch records</li> <li>• Provide management advice</li> <li>• Support Waterwatch and Saltwatch activities</li> </ul>	<ul style="list-style-type: none"> <li>• DELWP</li> <li>• CCMA</li> <li>• Landcare/community groups</li> </ul>
6.2	Identify sites still susceptible to erosion.	<ul style="list-style-type: none"> <li>• LCG area</li> </ul>	<ul style="list-style-type: none"> <li>• Susceptibility mapping</li> </ul>	<ul style="list-style-type: none"> <li>• CCMA</li> <li>• DELWP</li> <li>• Landcare/community groups</li> </ul>
6.4	Control existing gully, sheet and rill erosion using site specific treatment methods.	<ul style="list-style-type: none"> <li>• CCMA Soil Health Strategy priority investment areas.</li> <li>• Sites supporting remnant native vegetation.</li> <li>• Locally significant sites identified through Local Action Plans.</li> </ul>	<ul style="list-style-type: none"> <li>• Engineering treatments such as rock fills and earthworks</li> <li>• Biological treatment such as vegetation re establishment</li> </ul>	<ul style="list-style-type: none"> <li>• Landholders</li> <li>• Landcare/community groups</li> <li>• CCMA</li> <li>• DELWP</li> </ul>
6.6	Coordinate and or support industry/agency programs, targeted soil health field days/ workshops.	<ul style="list-style-type: none"> <li>• Target landholders in areas prone to soil health issues.</li> <li>• Priority soil health issues in the Leigh landscape zone including waterlogging, soil structure decline, soil acidification and nutrient decline</li> </ul>	<ul style="list-style-type: none"> <li>• Hold meetings with key delivery agencies.</li> <li>• Provide information to landholders and land managers.</li> <li>• Facilitate and/or promote workshops, information sessions and presentations.</li> </ul>	<ul style="list-style-type: none"> <li>• Landcare/community groups</li> <li>• CCMA</li> <li>• DELWP</li> </ul>

Ref.	Action	Priorities/location	Methods	Stakeholders/Partners
<b>7</b>	<b>Agricultural Best Practice</b>			
7.1	Support and/or promote farming or environmental best practice programs.	<ul style="list-style-type: none"> <li>• Broad acre and small acreage landholders</li> <li>• Whole farm planning</li> </ul>	<ul style="list-style-type: none"> <li>• Arrange meetings between LCG officers/ executive and program coordinators</li> <li>• Provide opportunities for presentations and information sessions e.g. pasture management, grazing issues, agricultural carbon offsets</li> <li>• Publicise programs in LCG media material</li> <li>• Provide information sources and reference material to landholders</li> <li>• Coordinate, promote and/or support farm planning training courses</li> <li>• Coordinate, promote and/or support field days and workshops.</li> </ul>	<ul style="list-style-type: none"> <li>• DELWP</li> <li>• DEDJTR</li> <li>• CCMA</li> <li>• Greening Australia</li> <li>• Landcare/community groups</li> <li>• Southern Farming Systems</li> </ul>
7.2	Sustainable agribusiness	<ul style="list-style-type: none"> <li>• Systems updates</li> <li>• Succession planning</li> </ul>	<ul style="list-style-type: none"> <li>• Industry workshops</li> <li>• Training events</li> <li>• Peer to peer learning</li> </ul>	<ul style="list-style-type: none"> <li>• Landholders</li> <li>• Landcare/community groups</li> <li>• DELWP</li> <li>• DEDJTR</li> <li>• CCMA</li> <li>• Southern Farming Systems</li> <li>• Registered Training Organisations</li> </ul>
7.3	Healthy Landholders	<ul style="list-style-type: none"> <li>• Landholder wellness</li> <li>• Increased networks – farmers/women</li> </ul>	<ul style="list-style-type: none"> <li>• Wellness on farm workshops</li> <li>• Women on farms support</li> </ul>	<ul style="list-style-type: none"> <li>• Landholders</li> <li>• Landcare/community groups</li> <li>• CCMA</li> <li>• Registered Training Organisations/Consultants</li> <li>• Dept of Health</li> </ul>

Ref.	Action	Priorities/location	Methods	Stakeholders/ Partners
<b>8</b>	<b>Rivers, waterway and wetland protection and enhancement</b>			
8.1	Riparian revegetation.	<ul style="list-style-type: none"> <li>Nationally, regionally or locally important waterways.</li> <li>Extensions to intact riparian vegetation.</li> <li>Waterways connecting patches of remnant vegetation.</li> <li>Waterways or gullies susceptible to erosion.</li> <li>CCMA Waterway Strategy priority investment areas.</li> <li>Locally significant sites identified through Local Action Plans.</li> </ul>	<ul style="list-style-type: none"> <li>Standard revegetation methods to establish a range of lifeforms/strata that match the relevant local EVC(s).</li> <li>Incorporate habitat features for a range of wildlife including aquatic fauna.</li> <li>Promote and encourage involvement in NRM agency river restoration and improvement programs.</li> </ul>	<ul style="list-style-type: none"> <li>Landholders</li> <li>Landcare/community groups</li> <li>CCMA</li> <li>DELWP</li> <li>Greening Australia</li> <li>Local government</li> <li>Seeding Victoria</li> <li>Schools</li> </ul>
8.2	Protect and enhance riparian zones.	<ul style="list-style-type: none"> <li>High conservation significance/quality waterways or waterways supporting remnant vegetation and/or fauna habitat.</li> <li>Waterways or gullies susceptible to erosion.</li> <li>Locally significant sites identified through Local Action Plans.</li> </ul>	<ul style="list-style-type: none"> <li>Fencing for site management</li> <li>Cease clearing and timber removal</li> <li>Ecological burning</li> <li>Controlled grazing for biomass and weed control</li> <li>Control pest plants and animals</li> <li>Restore degraded or missing vegetation components.</li> <li>Instream habitat enhancement.</li> <li>Willow removal</li> <li>Off stream watering</li> <li>Encourage sustainable farm practices</li> <li>Erosion control/streambed stabilisation</li> <li>Promote and encourage involvement in NRM agency river restoration and improvement programs.</li> </ul>	<ul style="list-style-type: none"> <li>Landholders</li> <li>Landcare/community groups</li> <li>CCMA</li> <li>DELWP</li> <li>Greening Australia</li> <li>Local government</li> <li>Seeding Victoria</li> <li>Schools</li> <li>CFA</li> </ul>
8.3	Monitor water quality data to demonstrate and identify priorities	<ul style="list-style-type: none"> <li>All waterways where data is available</li> </ul>	<ul style="list-style-type: none"> <li>Review Waterwatch, Index of Stream Condition and Index of Wetland Condition data</li> <li>Liaise with CCMA staff</li> </ul>	<ul style="list-style-type: none"> <li>CCMA</li> <li>CHW</li> <li>Waterwatch</li> </ul>
8.4	Protect, restore and/or enhance wetlands and associated native vegetation and fauna habitat.	<ul style="list-style-type: none"> <li>Internationally, Nationally or Regionally significant wetlands.</li> <li>Wetlands supporting rare and/or threatened flora or fauna</li> <li>Locally significant sites identified through Local Action Plans.</li> <li>Farm dams.</li> </ul>	<ul style="list-style-type: none"> <li>Remove artificial hydrological regimes that degrade wetland condition</li> <li>Fencing for site management</li> <li>Cease clearing and timber removal</li> <li>Ecological burning</li> <li>Controlled grazing for biomass and weed control</li> <li>Control pest plants and animals</li> <li>Restore degraded or missing vegetation components.</li> <li>Establish artificial fauna habitat</li> <li>Identify landholders of priority waterway sites and provide information and promote LCG programs.</li> <li>Wetland habitat improvement earthworks</li> </ul>	<ul style="list-style-type: none"> <li>Landholders</li> <li>Landcare/community groups</li> <li>CCMA</li> <li>DELWP</li> <li>Greening Australia</li> <li>Local government</li> <li>Seeding Victoria</li> <li>Schools</li> <li>CFA</li> </ul>
8.5	Restore native vegetation adjacent to wetlands to augment and buffer biodiversity values.	<ul style="list-style-type: none"> <li>Internationally, Nationally or Regionally significant wetlands.</li> <li>Wetlands supporting rare and/or threatened flora or fauna</li> <li>Locally significant sites identified through Local Action Plans.</li> <li>Farm dams.</li> </ul>	<ul style="list-style-type: none"> <li>Standard revegetation methods to establish a range of lifeforms/strata that match the relevant local EVC(s).</li> <li>Incorporate habitat features for a range of wildlife including aquatic fauna.</li> </ul>	<ul style="list-style-type: none"> <li>Landholders</li> <li>Landcare/community groups</li> <li>CCMA</li> <li>DELWP</li> <li>Greening Australia</li> <li>Local government</li> <li>Seeding Victoria</li> <li>Schools</li> </ul>
8.6	Promote and encourage involvement in NRM agency river and wetland restoration and improvement programs.	<ul style="list-style-type: none"> <li>Private land managers and landholders</li> </ul>	<ul style="list-style-type: none"> <li>Provide information to landholders and land managers.</li> <li>Facilitate and/or promote workshops, information sessions and presentations.</li> <li>Assist CCMA with implementation of the Corangamite Waterway Strategy 2014-2022</li> </ul>	<ul style="list-style-type: none"> <li>CCMA</li> <li>DELWP</li> <li>Greening Australia</li> <li>Schools</li> </ul>

Ref.	Action	Priorities/location	Methods	Stakeholders/Partners
<b>9</b>	<b>Disaster Recovery</b>			
9.1	Advocate for protection and rehabilitation of assets within the LCG area post disaster	<ul style="list-style-type: none"> <li>Emergency Management Victoria subcommittees – Natural Environment and Economic environment</li> <li>Local government led Community Recovery Committee</li> </ul>	<ul style="list-style-type: none"> <li>Seek representation on subcommittees – Natural environment and Economic environment</li> <li>Develop, seek funding and deliver onground projects in disaster affected area</li> </ul>	<ul style="list-style-type: none"> <li>DELWP</li> <li>DEDTJR</li> <li>Local government</li> <li>CCMA</li> </ul>
9.2	Support communities immediately post disaster	<ul style="list-style-type: none"> <li>Immediate social support</li> <li>Community resilience</li> </ul>	<ul style="list-style-type: none"> <li>Nominate LCG Board member and staff member for immediate response</li> <li>Coordinate local social events</li> <li>Seek representation on Community Recovery Committee</li> </ul>	<ul style="list-style-type: none"> <li>Landholders</li> <li>Landcare/community groups</li> <li>Local government</li> <li>Community support services e.g. Red Cross</li> </ul>
9.3	Support ongoing community and catchment healing	<ul style="list-style-type: none"> <li>Community education/training</li> <li>Delivery of onground restoration and enhancement projects</li> </ul>	<ul style="list-style-type: none"> <li>Coordinate agency and expert attendance at social events</li> <li>Plan and coordinate education and workshop events post disaster</li> </ul>	<ul style="list-style-type: none"> <li>DELWP</li> <li>DEDTJR</li> <li>Local government</li> <li>CCMA</li> <li>Landholders</li> <li>Landcare/community groups</li> </ul>

## 6. Implementation

### 6.1. Local Action Plans

The implementation of actions listed in Section 4 would be facilitated by local NRM action plans developed by Landcare or other community groups. These plans would incorporate the knowledge, interests and priorities of local landholders and land managers. The Strategic Plan provides background information and context for the development of the local action plans and highlights areas or issues for potential NRM projects that could be undertaken through a Landcare or other community group.

A template is provided in Appendix 3 to assist community based groups to develop a local NRM action plan.

### 6.2. Leigh Catchment Group structure and administration

In April 2013, the Leigh Catchment Group became independently incorporated through Consumer Affairs Victoria under the name of Yarrowee Leigh Catchment Group Inc. (YLCG). This entity now governs all the business and Board matters in relation to our work, however we still promote ourselves as Leigh Catchment Group (LCG).

In September 2016, a new constitution was adopted for Yarrowee Leigh Catchment Group Inc.

The Board consists of up to ten and no less than five elected YLCG members. The Board is supported by Landcare Coordinator staff and Administrative Support staff as required. The Landcare Coordinators coordinate and manage projects and activities undertaken through LCG and provides support to the Landcare group members. The key organisational features and processes that will support the LCG in delivering successful initiatives are outlined in Section 6-3.

#### Board Membership

Any person who supports the purposes of the YLCG, and meets at least one of the following criteria, is eligible for membership:

- Any member of an associated Landcare group or community-based natural resource management group which makes up the YLCG.
- Landholders not being a member of a Landcare group who reside within the YLCG area
- Any person not being a landholder but who supports the purpose of the YLCG.

## 6.3. Actions for LCG governance, network and processes

Ref.	Action	Priorities/location	Methods	Stakeholders/Partners
<b>1</b>	<b>Board Governance</b>			
1.1	Conduct at least 5 Board meetings per year including the Annual General Meeting	<ul style="list-style-type: none"> <li>Set Board and AGM meeting dates</li> </ul>	<ul style="list-style-type: none"> <li>Secretary to confirm dates at Board meetings</li> <li>Publicise AGM according to Constitution</li> </ul>	<ul style="list-style-type: none"> <li>Board members</li> <li>YLCG members</li> <li>Landcare groups</li> </ul>
1.2	Conduct at least 2 General meetings per year	<ul style="list-style-type: none"> <li>Groups, and individuals in LCG area</li> <li>Landcare Connect events</li> </ul>	<ul style="list-style-type: none"> <li>Publicise general meetings throughout LCG area</li> <li>Provide different meeting formats to engage broad audience across LCG area</li> </ul>	<ul style="list-style-type: none"> <li>Board members</li> <li>YLCG members</li> <li>Landcare groups</li> <li>Agencies</li> <li>Community</li> </ul>
1.3	Board Succession Planning	<ul style="list-style-type: none"> <li>Skills based Board</li> <li>Membership</li> </ul>	<ul style="list-style-type: none"> <li>Actively seek new members and Board recruits</li> </ul>	<ul style="list-style-type: none"> <li>Board members</li> <li>YLCG members</li> </ul>

Ref.	Action	Priorities/location	Methods	Stakeholders/Partners
<b>2</b>	<b>Network support, engagement and capacity building</b>			
2.1	Provide support to LCG network Landcare and other community environment groups	<ul style="list-style-type: none"> <li>LCG network Landcare groups</li> <li>Other community environment groups</li> <li>Opportunity for Landcare group presentations and information sharing</li> <li>Opportunity for raising Landcare issues for Board consideration</li> </ul>	<ul style="list-style-type: none"> <li>Provide Landcare Coordinator support for: <ul style="list-style-type: none"> <li>Project development</li> <li>NRM advice and information</li> <li>Group support</li> <li>Funding opportunities</li> </ul> </li> <li>Provide networking opportunities – Landcare Connect</li> <li>Implementation of Landcare support strategy processes and recommendations</li> <li>Support and publicise Landcare group activities via LCG communications</li> </ul>	<ul style="list-style-type: none"> <li>Board members</li> <li>YLCG members</li> <li>Landcare groups</li> <li>Community groups</li> </ul>

Ref.	Action	Priorities/location	Methods	Stakeholders/Partners
<b>3</b>	<b>Administration</b>			
3.1	Maintain LCG community hub	<ul style="list-style-type: none"> <li>LCG Office in accessible location for community</li> </ul>	<ul style="list-style-type: none"> <li>Ensure On costs funding is incorporated into grant and funding applications</li> <li>Maintain partnerships with Royal Park Committee of Management</li> </ul>	<ul style="list-style-type: none"> <li>Board members</li> <li>LCG staff</li> <li>Friends of Royal Park</li> <li>City of Ballarat</li> </ul>
3.2	Maintain/Increase LCG Landcare Coordinators	<ul style="list-style-type: none"> <li>Minimum 1 Full time Equivalent Landcare support staff member (preferably at least 2 part time roles)</li> <li>Project aligned</li> <li>Support to Board</li> </ul>	<ul style="list-style-type: none"> <li>Ensure sufficient funding through grant and funding applications</li> <li>Support advocacy groups for Landcare support staff e.g. Landcare Victoria Inc</li> </ul>	<ul style="list-style-type: none"> <li>Board members</li> <li>LCG staff</li> <li>DELWP</li> <li>CCMA</li> <li>LVI</li> </ul>
3.3	Maintain/extend LCG administrative support	<ul style="list-style-type: none"> <li>Support to Treasurer</li> <li>Support to Board</li> </ul>	<ul style="list-style-type: none"> <li>Ensure On costs funding is incorporated into grant and funding applications</li> </ul>	<ul style="list-style-type: none"> <li>Board members</li> <li>LCG staff</li> </ul>

Ref.	Action	Priorities/location	Methods	Stakeholders/Partners
<b>4</b>	<b>Staff support</b>			
4.1	Maintain/expand HR subcommittee	<ul style="list-style-type: none"> <li>HR Operating Procedures</li> <li>Staff review systems</li> <li>Board expertise</li> </ul>	<ul style="list-style-type: none"> <li>Update Operating procedures as required</li> <li>Ensure adequate staff review opportunities</li> <li>Undertake governance training as required</li> <li>Utilise external expertise as required</li> </ul>	<ul style="list-style-type: none"> <li>Board members</li> <li>LCG staff</li> </ul>
4.2	Staff Professional Development	<ul style="list-style-type: none"> <li>Training</li> <li>Mentoring</li> <li>Networking opportunities</li> </ul>	<ul style="list-style-type: none"> <li>Support/encourage training requests</li> <li>Provide induction materials for new staff</li> <li>Support conference attendance</li> <li>Support attendance at Landcare coordinator networks</li> </ul>	<ul style="list-style-type: none"> <li>Board members</li> <li>LCG staff</li> <li>CCMA</li> <li>LVI</li> </ul>
4.3	IT/equipment support	<ul style="list-style-type: none"> <li>Equipment and facilities</li> <li>External Professional support</li> </ul>	<ul style="list-style-type: none"> <li>Staff training</li> <li>Software upgrades as required</li> <li>Equipment upgrades as required</li> <li>Ensure on cost funding is sufficient</li> </ul>	<ul style="list-style-type: none"> <li>Board members</li> <li>LCG staff</li> </ul>

Ref.	Action	Priorities/location	Methods	Stakeholders/Partners
<b>5</b>	<b>Partnerships</b>			
5.1	Maintain/extend network membership	<ul style="list-style-type: none"> <li>NRM/landscape networks</li> <li>Sustainability networks</li> <li>Community networks</li> <li>Agency networks</li> </ul>	<ul style="list-style-type: none"> <li>Appoint Board members/staff as representatives</li> <li>Support network initiatives as appropriate</li> </ul>	<ul style="list-style-type: none"> <li>Board members</li> <li>LCG staff</li> <li>Agencies</li> </ul>
5.2	Develop project based partnerships	<ul style="list-style-type: none"> <li>LCG network projects</li> <li>Landscape scale projects</li> <li>CMA/State based initiatives</li> </ul>	<ul style="list-style-type: none"> <li>Landscape and Local Action planning</li> <li>Utilise NRM Portal</li> </ul>	<ul style="list-style-type: none"> <li>Board members</li> <li>LCG staff</li> <li>Agencies</li> <li>Bunanyung Landscape Alliance</li> </ul>



## 6.4. Support and Partnerships

A range of agencies and organisations may provide assistance with the delivery of actions listed in this plan. Partnerships with one or more of the groups listed below may be formed to deliver a range of outcomes across a variety of NRM, land use types, community and landholder projects.

Key agencies/organisations	Roles and responsibilities
Ballarat Environment Network	Biodiversity management, NRM knowledge and information, coordination of NRM projects
Barwon Water	Water management
Bunanyung Landscape Alliance	Landscape scale planning and project support
Central Highlands Water	Water management
Corangamite Catchment Management Authority	Funding, native vegetation management, waterway and wetland management, NRM information management, volunteer group support. Carbon trading opportunities
Corrections Victoria	Delivery of onground outcomes
Department of Environment, Land, Water and Planning	Development and implementation of sustainability and biodiversity policies, programs and priorities. Crown Land Reserves
Department of Economic Development, Jobs transport and Resources	Development and implementation of agricultural and weed policies, programs and priorities.
Friends of Royal Park	Landcare Hub facilities a Royal Park
Greening Australia	Development and implementation of sustainability and biodiversity programs. NRM knowledge and information, coordination of NRM projects. Community Education.
Indigenous organisations and communities	Cultural knowledge and surveys, management of culturally significant sites and values, land management
Landcare groups and other community based NRM groups	Implementation of NRM projects including on-ground works, community capacity building and networking, development of local action plans
Landcare Networks: Woody Yaloak Catchment Group Moorabool Landcare Network Geelong Landcare Network Upper Barwon Landcare Network	Implementation of NRM projects including on-ground works, community capacity building and networking. Shared resources Landscape alliances
Local businesses and industry	NRM related technological services and products. NRM management expertise and services. Financial support/sponsorship of NRM projects. 'Other' local businesses should be utilised where possible e.g. IT support, catering, signage maintenance etc.
Local Government: City of Ballarat Moorabool Shire Council Golden Plains Shire	Public land management (including relevant roadsides), strategic land use planning, sustainability planning and development, statutory planning, policy development, storm water management
Parks Victoria	Management of biodiversity and other natural resource values on Parks and reserves
Regional Sustainability Alliance Ballarat	Development of climate change and sustainability projects
Seeding Victoria	Coordination of indigenous seed supply. Community education programs.
Southern Farming Systems	Agricultural research and expertise
VicRoads	Management of biodiversity and other natural values on roadsides. Control of pest plants and animals
VicTrack	Management of biodiversity and other natural values on rail reserves. Control of pest plants and animals

## 7. Monitoring, Evaluation and Reporting

Monitoring, evaluation and reporting (MER) are important elements of this strategy and its implementation. An effective MER framework that is an integral part of the strategy will:

- be accountable to partners investing in LCG projects
- evaluate the effectiveness of actions undertaken so they can be adjusted if required
- ensure programs and investment achieve the LCG vision, goals and objectives.

An effective monitoring and assessment process requires the measurement of inputs (e.g. number of trees planted, length of fencing, number of workshops/field days) and outputs (e.g. changes in native vegetation extent and quality, changes in extent and severity of erosion, community participation levels and knowledge) need to be measured.

The LCG currently records and monitors inputs (including costs) in the Leigh Catchment Group Project Database (custom designed relational database) and a cloud based accounting package. LCG maintains historic and current spatial records of projects using a geographical information system. Data is uploaded periodically into CCMA Natural Resource Management Planning Portal.

Project reporting to investors will be in accordance with that required in each project Service Level Agreement. Other monitoring techniques will be used as required by the organisation or individual projects including facilitated workshops, regional initiatives such as the Clear Learning Environmental Action, and Most Significant Change stories.

The LCG Board produces an Annual Report including a financial statement.

The key processes required for monitoring and evaluating activities within the LCG are listed in Section 7-1.

### 7.1. NRM monitoring and evaluation framework

Task/process	Timeline	Responsibility
Enter NRM project information into LCG Project Database/accounting database.	At commencement of all projects and update as required during active period of project	LCG
Map LCG NRM projects (where applicable) to complement project information held in the LCG Project Database/accounting database	At completion of all projects (where project has a spatial component)	LCG
Transfer data to CCMA NRM Planning Portal	Annually minimum	LCG/CCMA
Submit Landcare facilitator reports to DELWP	Specified by DEWLP	LCG
Develop and implement Monitoring and Evaluation techniques for all projects	At commencement of all projects, update as required during active period of project and at end	LCG
Assess community participation in NRM within the Leigh Catchment and evaluate community perceptions of the Leigh Catchment Group.	As required	CCMA/LCG
Develop targeted experimental research projects to determine changes and effects in relation NRM works within the catchment	To be determined	LCG/CCMA/DELWP//tertiary institutions